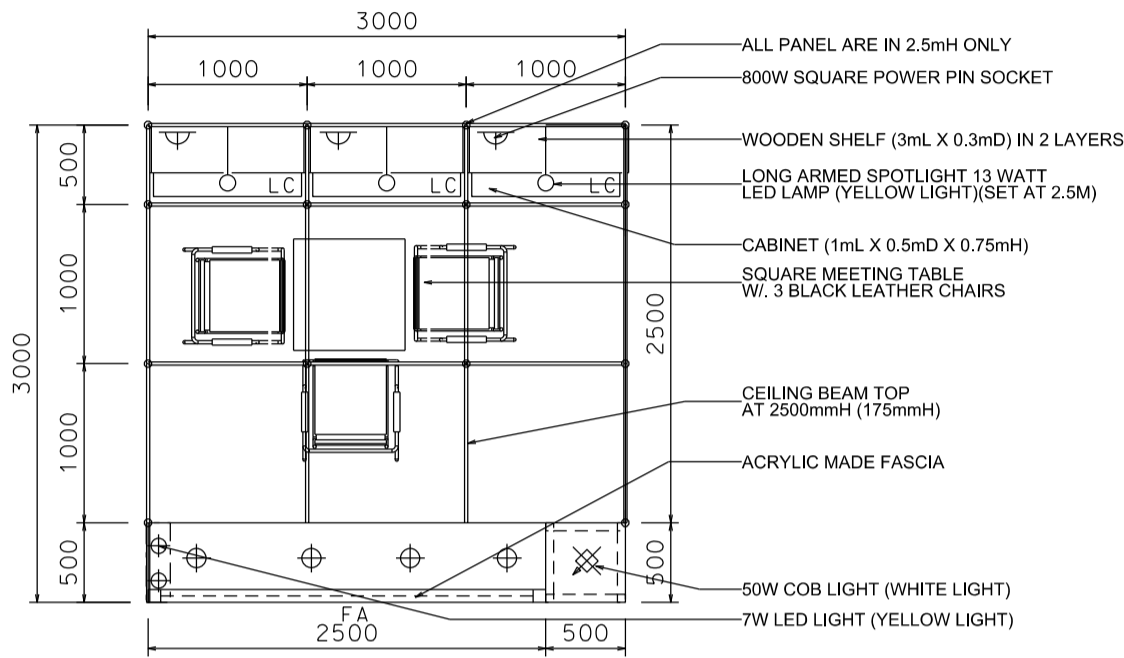
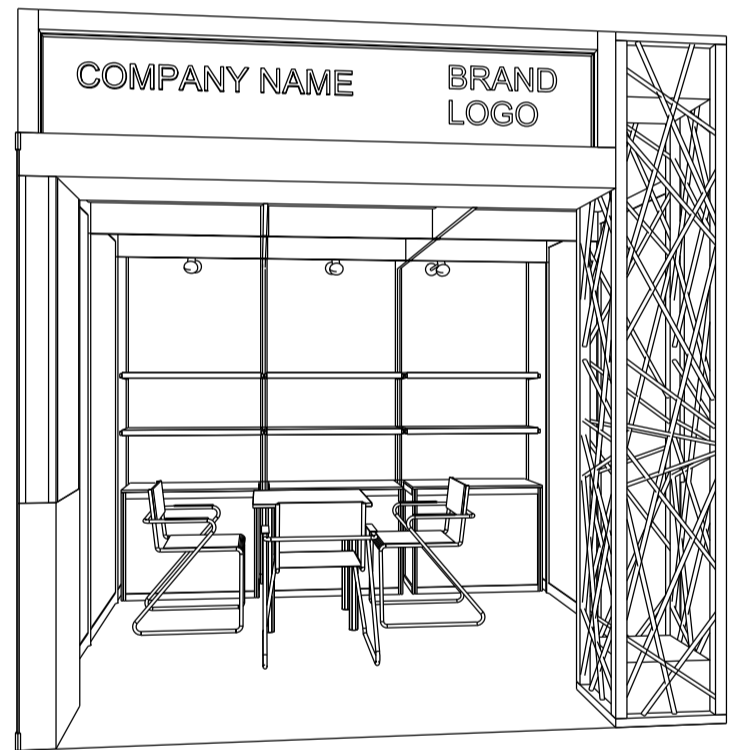


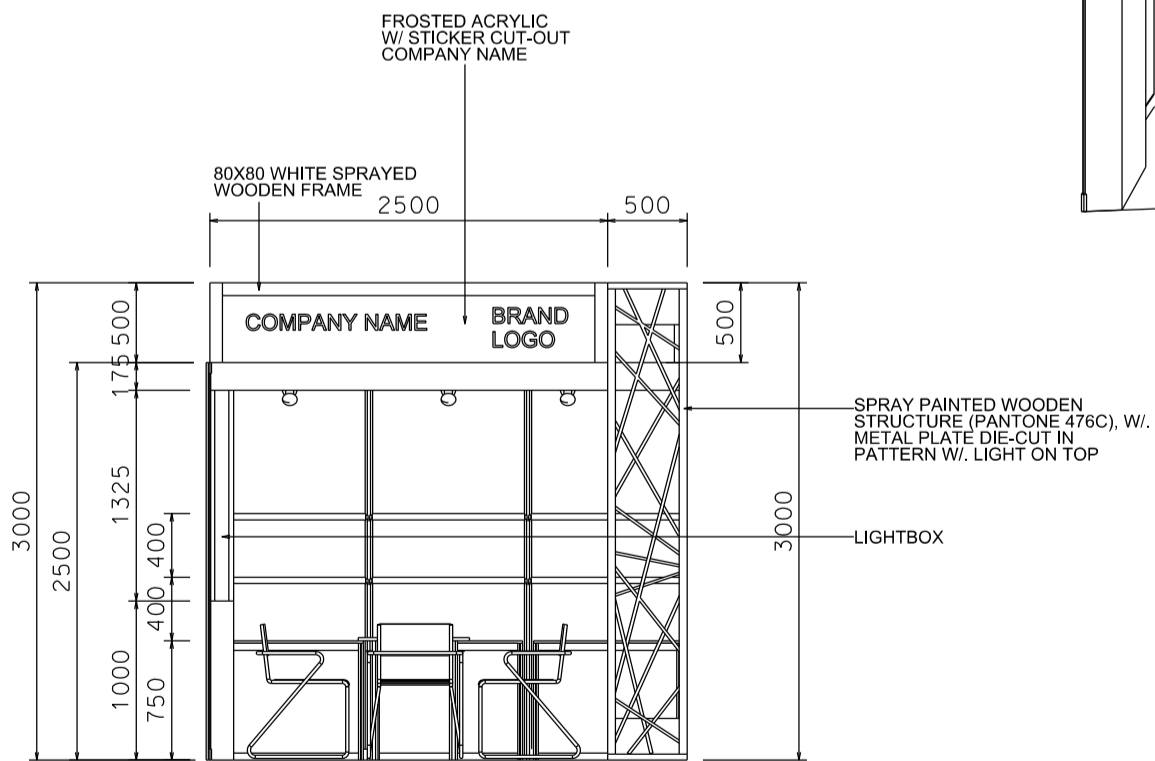
9 sqm. Hall of Aurora non-corner booth



PLAN



PERSPECTIVE



ELEVATION

| LEGEND | DESCRIPTION | QTY |
|--------|--|-----|
| LC | 1000MM W. X 500MM D. X 750MM HT. LOCKABLE CABINET | 3 |
| □ | 3000mmL X 300mmD FLAT WOODEN SHELF | 2 |
| TA | SQUARE MEETING TABLE | 1 |
| CH | BLACK LEATHER CHAIR | 3 |
| --- | 175mmH CEILING BEAM | 11M |
| ⊙ | LONG ARMED SPOTLIGHT 13 WATT LED LAMP (YELLOW LIGHT) | 3 |
| ⊗ | 50W COB LIGHT (WHITE LIGHT) | 1 |
| ⊕ | 7W LED LIGHT (YELLOW LIGHT) | 8 |
| ⌒ | 800W SQUARE PIN POWER SOCKET | 3 |

Maximum weight of lighting products hanging in the ceiling grid is 30kg (evenly distributed).
分佈懸掛於天花橫樑上的燈飾產品合共最高負重為30公斤