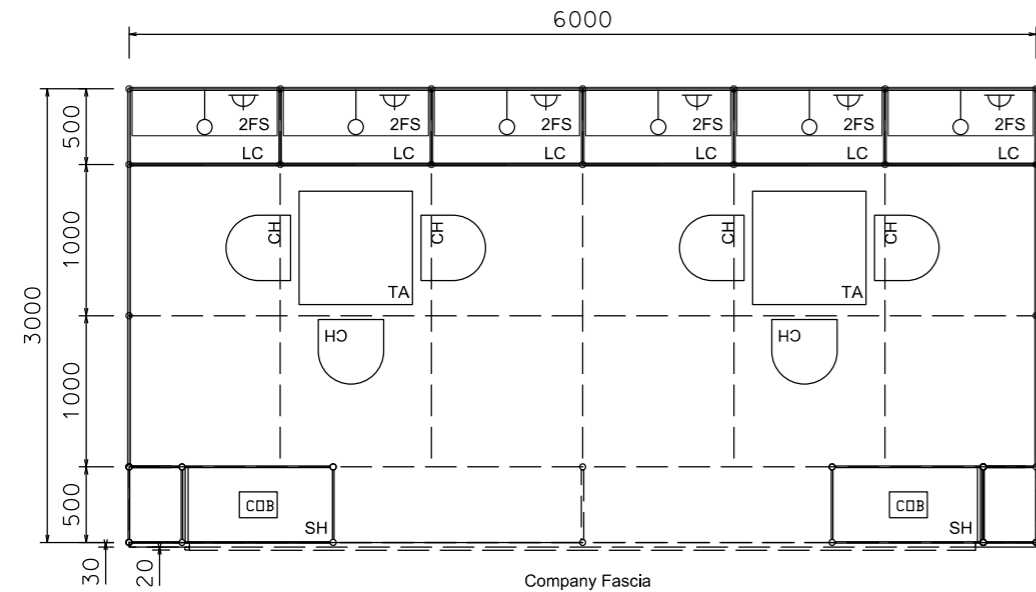
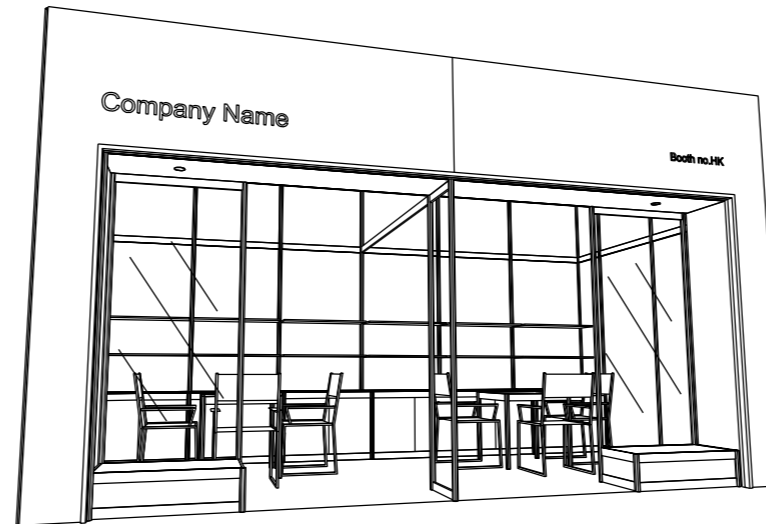


Premium Booth 6mW x 3mD One Side Open

LT-B-18
6mW x 3mD x 3.5mH



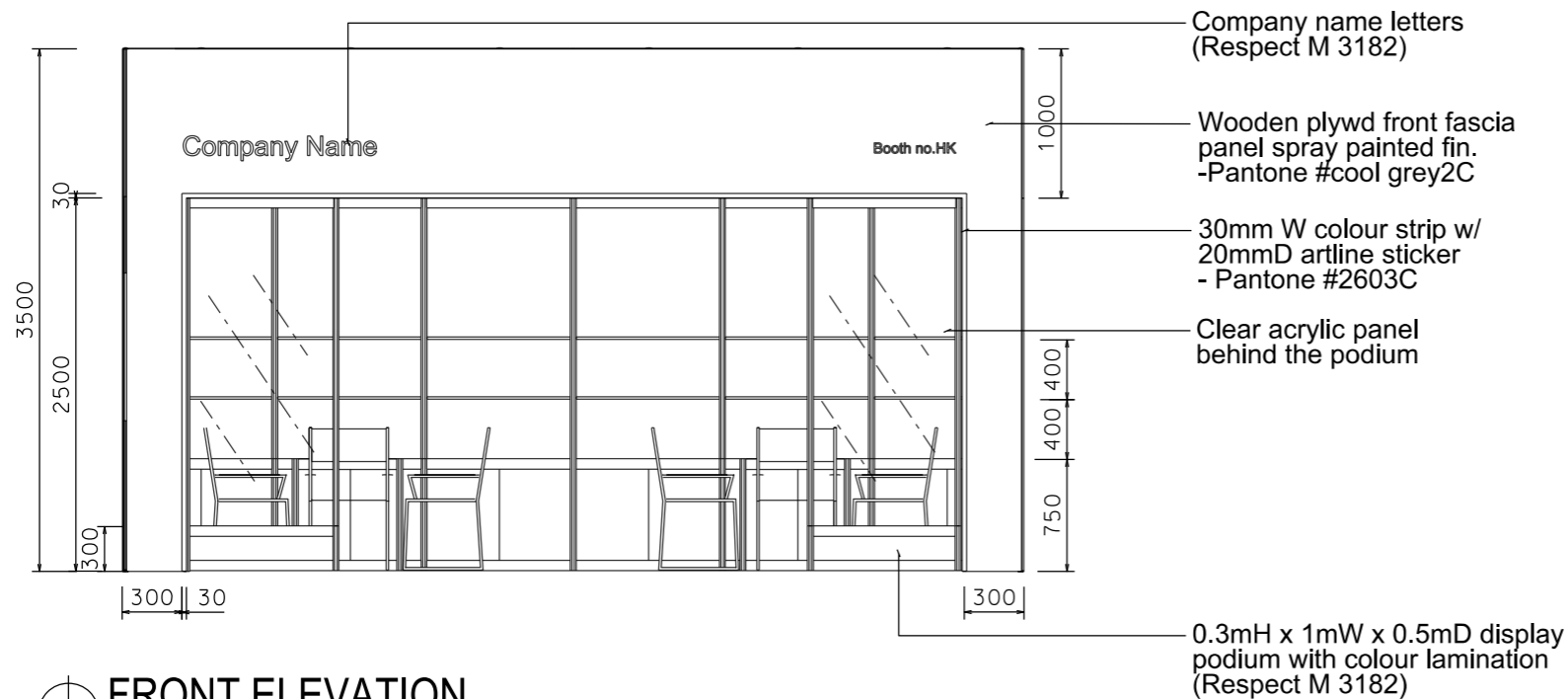
PLAN



PERSPECTIVE N.T.S



COLOUR PERSPECTIVE N.T.S



FRONT ELEVATION

BOOTH SPECIFICATION		QTY
	Front display podium(1mW x 0.3mH) with clear acrylic back panel in colour sticker lamination w/. 1 x 50W COB LIGHT(white light)	2
	Lockable cabinet (1mL x 0.5mD x 0.75mH)	6
	Wooden shelf (flat) (1mL x 0.3mD)	12
	Square meeting table (0.7m X0.7m x 0.75mH)	2
	Black leather chair	6
	Longarmed spotlight w/13 watt LED lamp (yellow) set at 3.5mH	6
	800w Square pin power socket	6
	Ceiling grid (175mmH) set at 3.5mH	30.5m

FILE PATH - \$FILES\$



NOTES UNLESS OTHERWISE SPECIFIED ALL DIMENSIONS ARE IN MM.

.....
.....
.....

REVISION
23/02/2010
13/04/2011
16-10-2013
06/02/2014
12-07-2019

DATE: 12-07-2019
SCALE: 1 : 50 (A3)
DRAWN BY: ..
CHECKED BY:

TITLE
Premium Booth
LT-B-18

PROJECT
PREMIUM BOOTH
6m x 3m
DATE: XXXXXXXX

SHEET
LT-B02