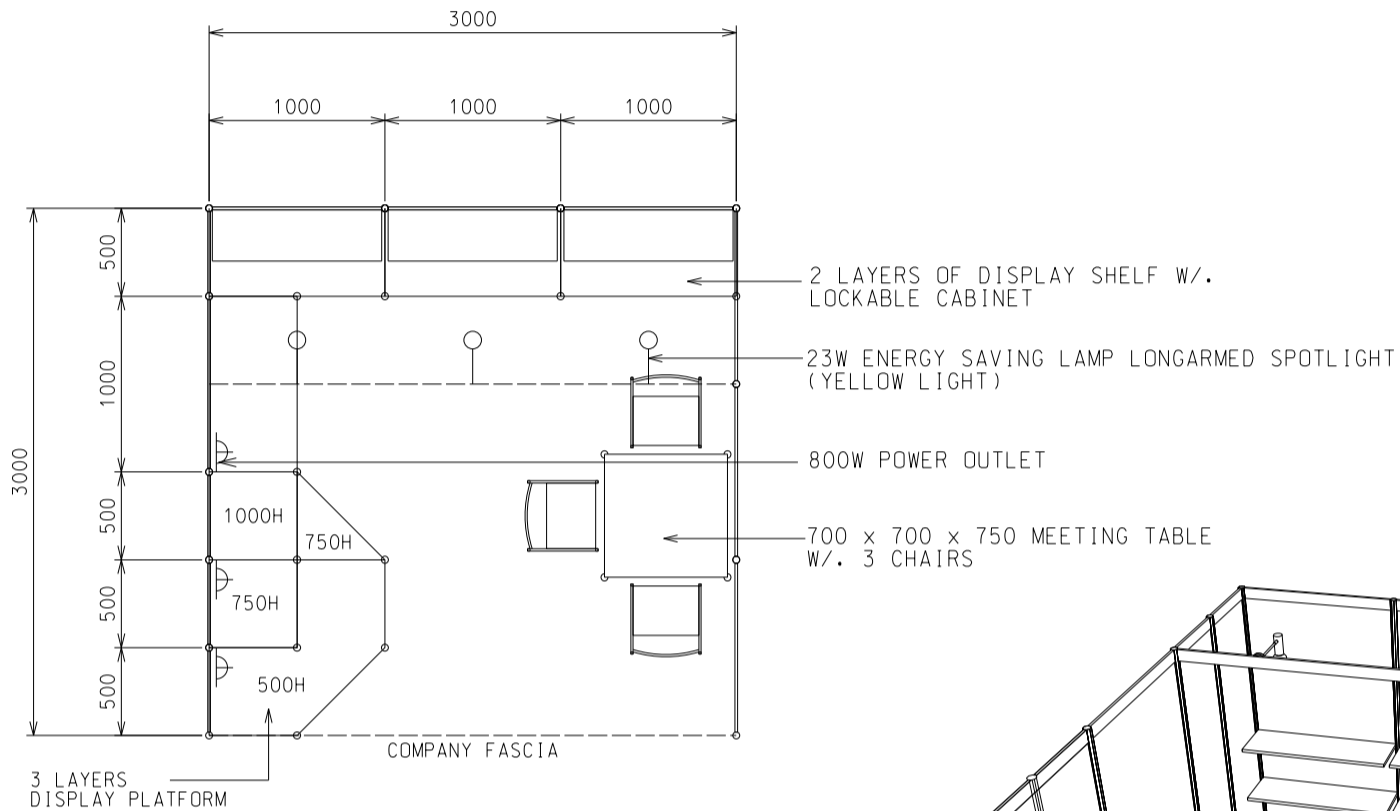


### IMPORTANT NOTICE AMENDMENT OF BOOTH LIGHTING SPECIFICATIONS

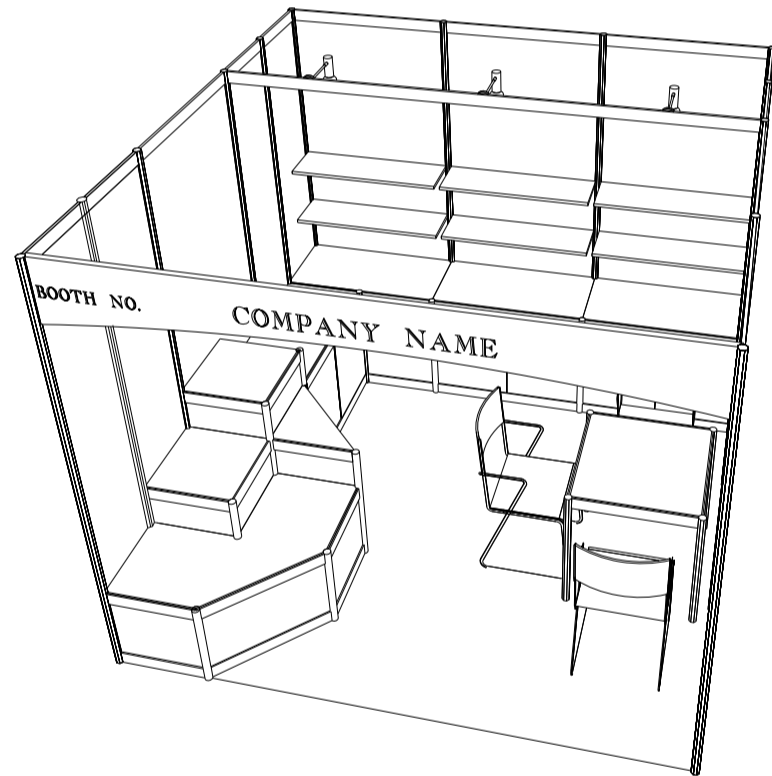
ALL LIGHTS SPECIFIED AS 23 WATT ENERGY SAVING LAMPS (BOTH SPOTLIGHT/LONGARMED) ON THIS DRAWING WILL BE CHANGED TO **13 WATT LED LAMPS**, WITH EFFECT ON THE 1<sup>ST</sup> OF JANUARY 2019.

### 9 sqm. Standard Booth (Option B)

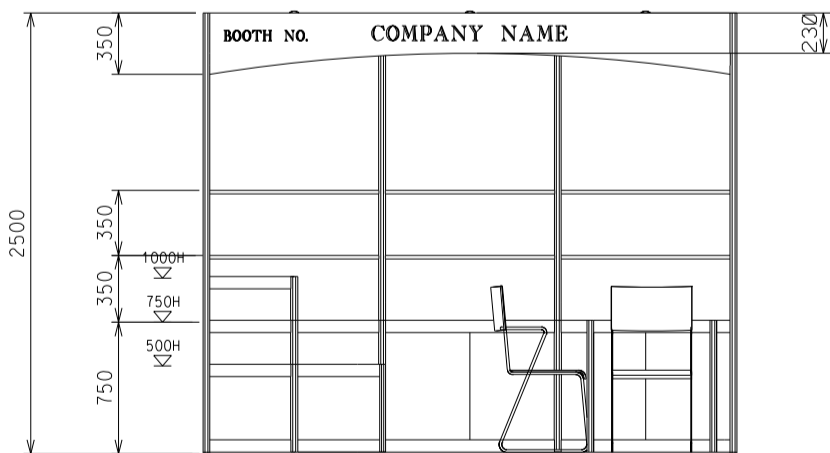
九平方米標準攤位 (建議B)



**PLAN**  
3M(W) X 3M(D) X 2.5M(H)  
Standard Booth B



**PERSPECTIVE**  
3M(W) X 3M(D) X 2.5M(H)  
Standard Booth B



**ELEVATION**  
3M(W) X 3M(D) X 2.5M(H)  
Standard Booth B

BOOTH SPECIFICATIONS		QTY.
	1000W x 500D x 750H LOCKABLE CABINET	4
	3000W x 300D WOODEN DISPLAY SHELF	2
	3 LAYERS OF DISPLAY PLATFORM	1
	700W x 700D x 750H MEETING TABLE	1
	BLACK LEATHER CHAIR	3
	23W ENERGY SAVING LAMP LONGARMED SPOTLIGHT (YELLOW LIGHT)	3
	800W SOCKET	3
	H70mm CEILING BEAM	3M
	RUBBISH BIN & CARPET (9sqm.)	