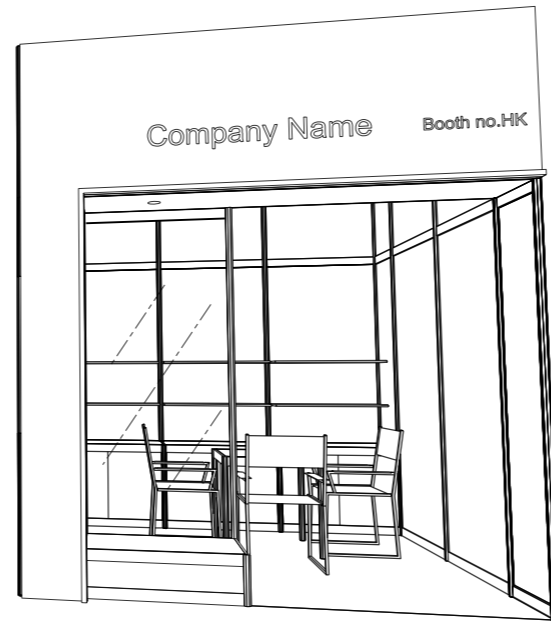
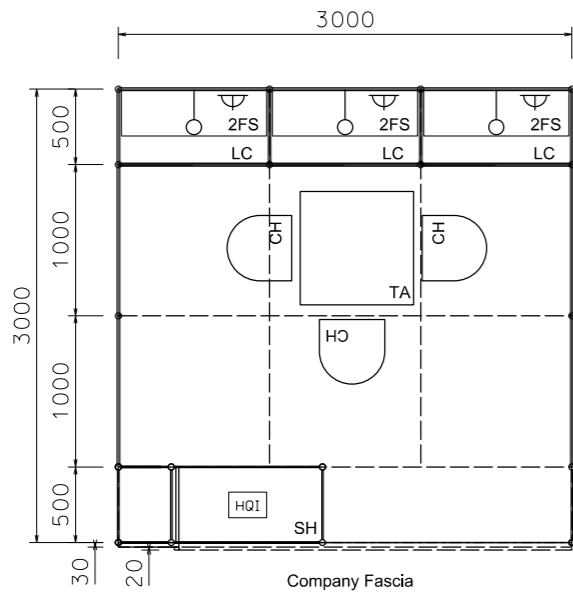


# Premium Booth 3mW x 3mD One side open

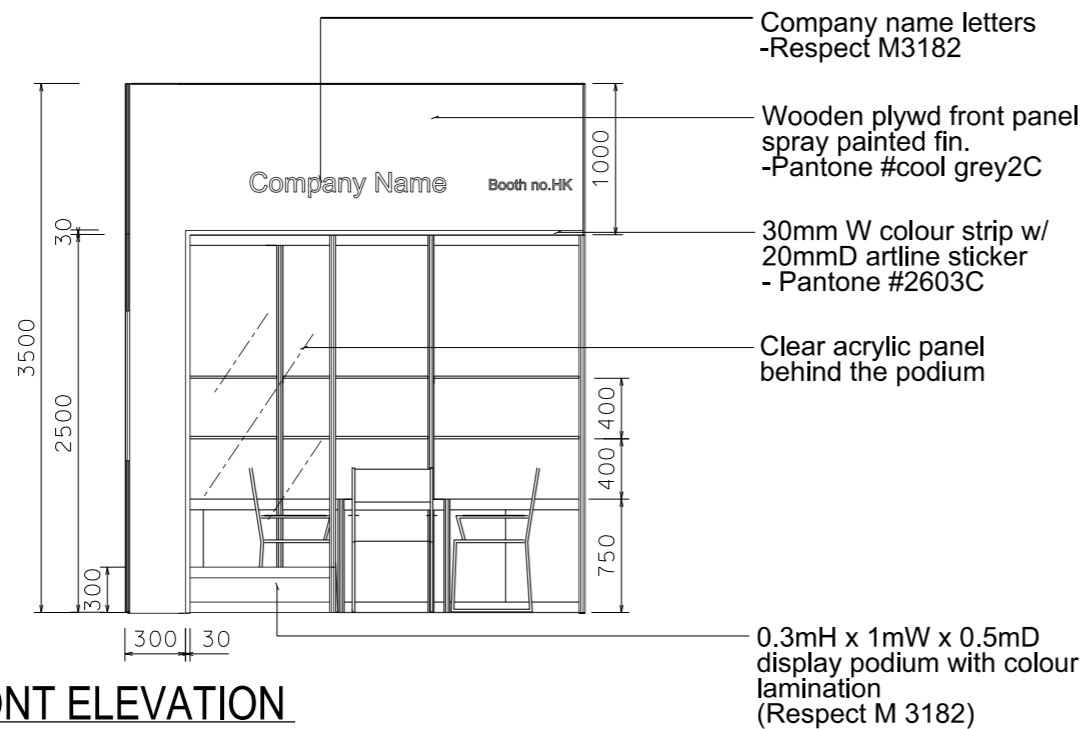
LT-B-9  
3mW x 3mD x 3.5mH



PLAN

PERSPECTIVE N.T.S

COLOUR PERSPECTIVE N.T.S



FRONT ELEVATION

**IMPORTANT NOTICE**  
**AMENDMENT OF BOOTH LIGHTING SPECIFICATIONS**

ALL LIGHTS SPECIFIED AS 23 WATT ENERGY SAVING LAMPS (BOTH SPOTLIGHT/LONGARMED) ON THIS DRAWING WILL BE CHANGED TO **13 WATT LED LAMPS**, WITH EFFECT ON THE 1<sup>st</sup> of JANUARY 2019.

BOOTH SPECIFICATION		QTY
	Front display podium (1mW x 0.3mH) with clear acrylic back panel in colour sticker lamination w/. 1 x HQL white light	1
	Lockable cabinet (1mL x 0.5mD x 0.75mH)	3
	Wooden shelf (flat) (1mL x 0.3mD)	6
	Square meeting table (0.7m X0.7m x 0.75mH)	1
	Black leather chair	3
	Longarmed spotlight w/23 watt energy saving lamp (yellow) set at 3.5mH	3
	800w Square pin power socket	3
	Ceiling grid (175mmH) set at 3.5mH	14m

FILE PATH - L:\Local Fair Premium Booth 2011\LT-B layout\LT-B-2dLayout\_update.dgn



**NOTES** UNLESS OTHERWISE SPECIFIED ALL DIMENSIONS ARE IN MM.

.....	.....
.....	.....
.....	.....

REVISION  
02/09/2009  
23/09/2009  
02/10/2009  
22/12/2009  
28/12/2009  
13/04/2011  
23/10/2013  
18/07/2014

DATE: 18-07-2014  
SCALE: 1 : 50 (A3)  
DRAWN BY: ..  
CHECKED BY: .....

TITLE  
Premium Booth LT-B-9

PROJECT  
PREMIUM BOOTH 3m x 3m  
DATE: XXXXXXXX

SHEET  
LTB01