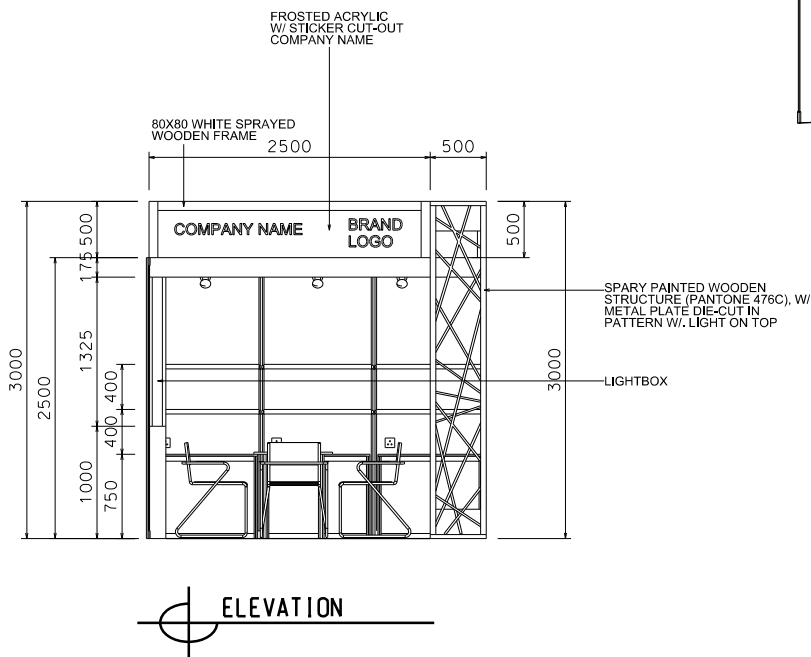
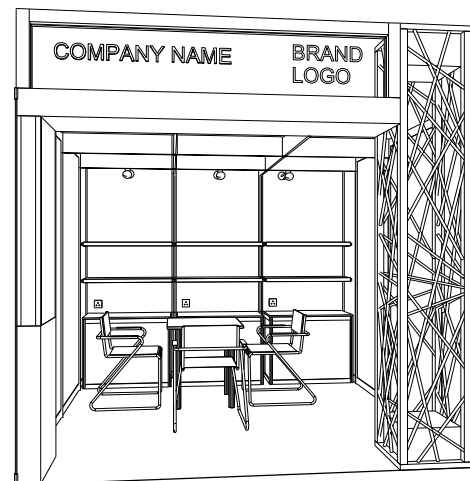
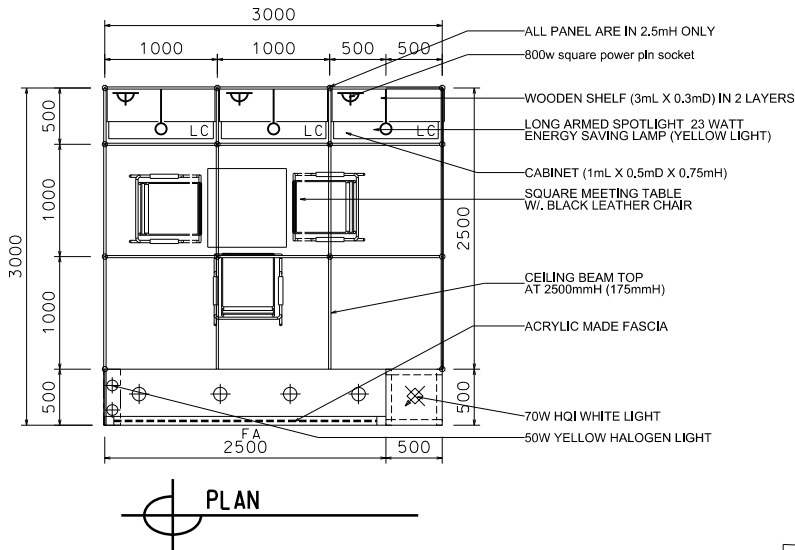


ALL LIGHTS SPECIFIED AS 23 WATT ENERGY SAVING LAMPS (BOTH SPOTLIGHT/LONGARMED) ON THIS DRAWING WILL BE CHANGED TO **13 WATT LED LAMPS**, WITH EFFECT ON THE 1ST OF JANUARY 2019.

9 sqm. Hall of Aurora non-corner booth



LEGEND	DESCRIPTION	QTY
	1000MM W. X 500MM D. X 750MM HT. LOCKABLE CABINET	3
	3000mL X 300mD FLAT WOODEN SHELF	2
	SQUARE MEETING TABLE	1
	BLACK LEATHER CHAIR	3
	175mmH CEILING BEAM	11M
	LONG ARMED SPOTLIGHT 23 WATT ENERGY SAVING LAMP (YELLOW LIGHT)	3
	70W HQI (WHITE LIGHT)	1
	50W YELLOW HALOGEN LIGHT	8
	800W SQUARE PIN POWER SOCKET	3

Maximum weight of lighting products hanging in the ceiling grid is 30kg (evenly distributed).

分佈懸掛於天花橫樑上的燈飾產品合共最高負重為30公斤