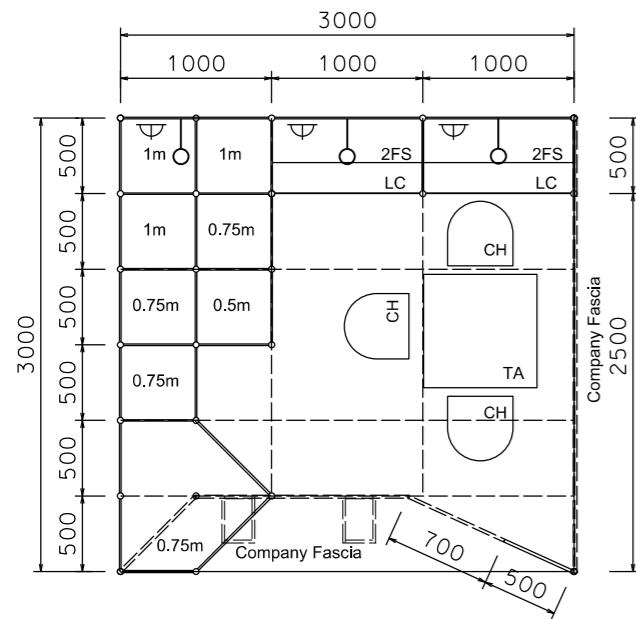
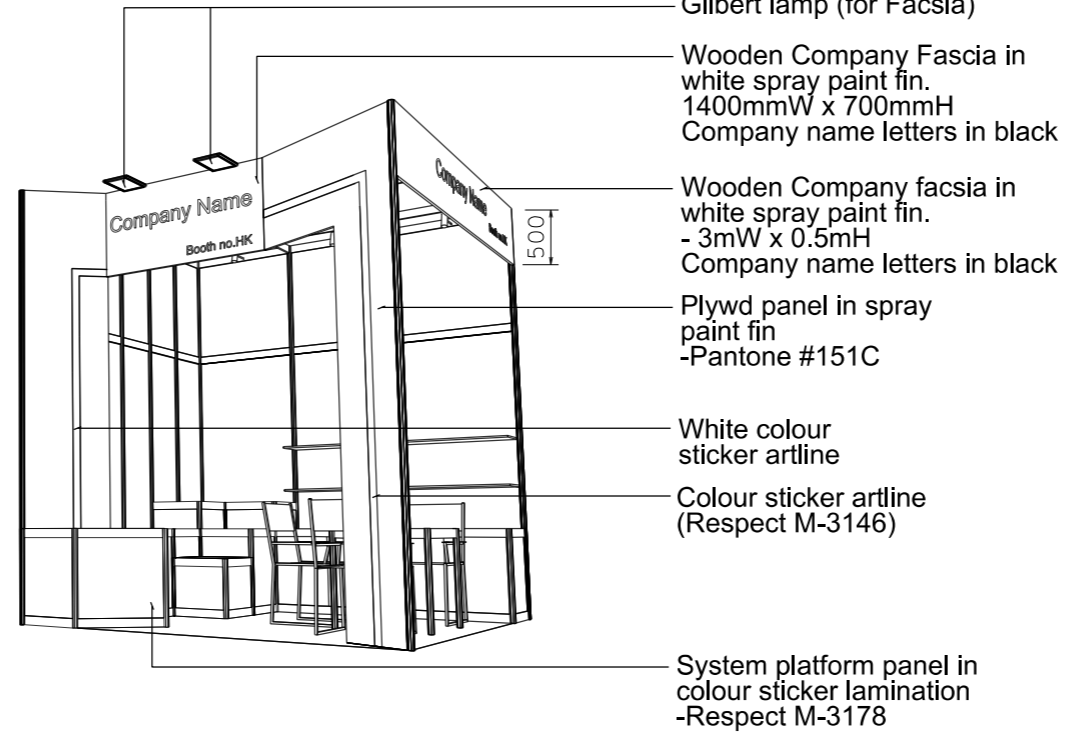


Premium Booth 3mW x 3mD Right Corner Booth

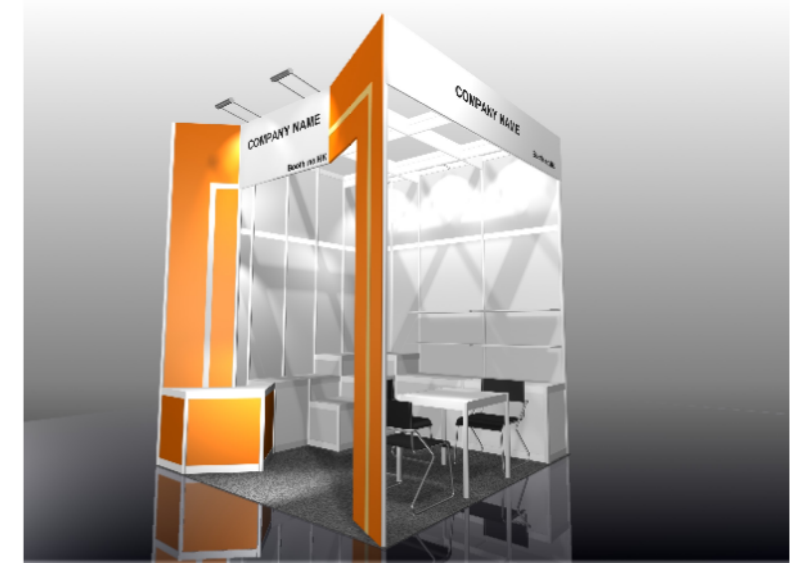
LT-C-9-R_Cnr
3mW x 3mD x 3.5mH



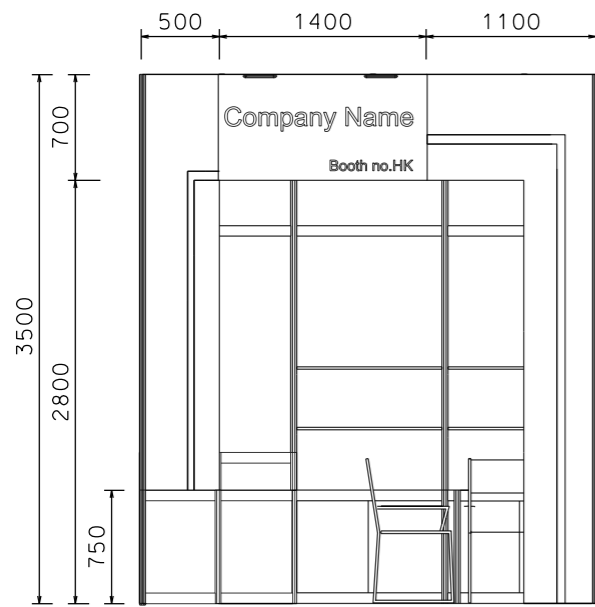
PLAN



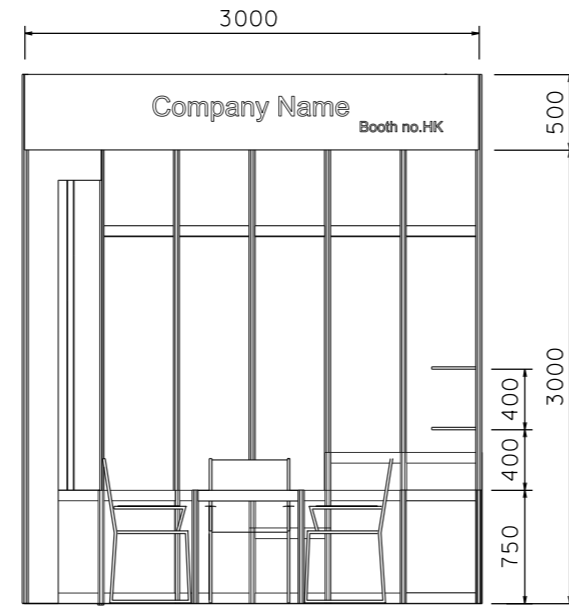
PERSPECTIVE N.T.S



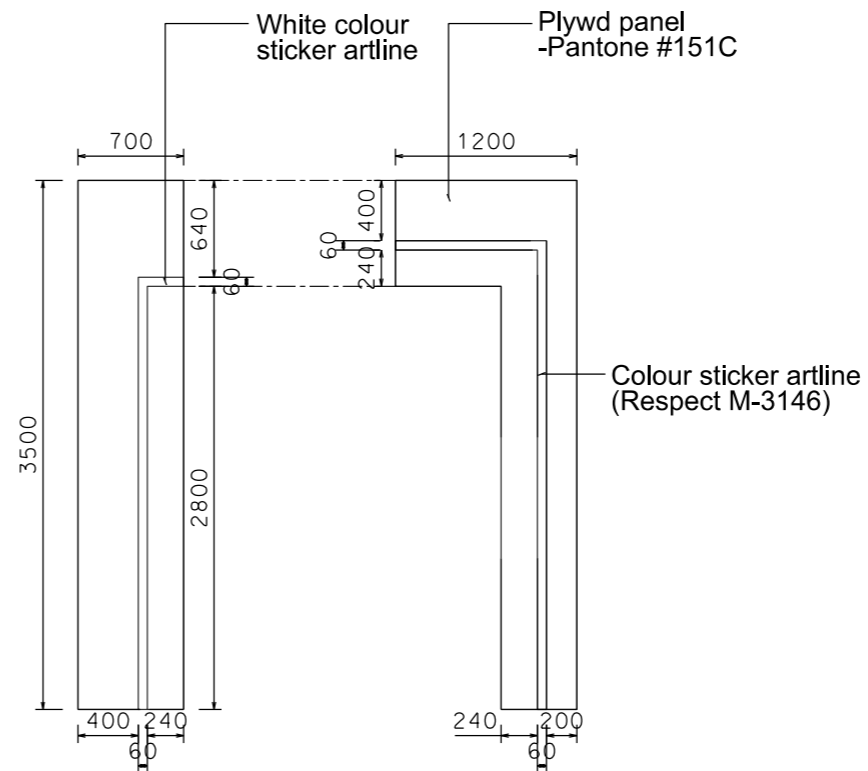
COLOUR PERSPECTIVE N.T.S



FRONT ELEVATION



SIDE ELEVATION



FACسيا ELEVATION

| BOOTH SPECIFICATION | | QTY |
|---------------------|--|-----|
| | Lockable cabinet (1mL x 0.5mD x 0.75mH) | 2 |
| | Wooden shelf (flat) (1mL x 0.3mD) | 4 |
| | 1mH podium (0.5m x 0.5m x 1mH) | 3 |
| | 0.75mH podium (0.5m x 0.5m x 0.75mH) | 3 |
| | 0.5mH podium (0.5m x 0.5m x 0.5mH) | 1 |
| | 0.75mH podium in colour sticker lamination (Respect M-3178) | 1 |
| | Square meeting table (0.7m X 0.7m x 0.75mH) | 1 |
| | Black leather chair | 3 |
| | Longarmed spotlight w/23 watt energy saving lamp (yellow) set at 3.5mH | 3 |
| | 800w Square pin power socket | 3 |
| | 150W Gilbert lamp (for fascia) | 2 |
| | Ceiling grid (175mmH) set at 3.5mH | 14m |

FILE PATH - L:\Local Fair Premium Booth 2011\LT-C layout\LT-C-2dLayout_update.dgn



NOTES UNLESS OTHERWISE SPEBIFIED ALL DIMENSIONS ARE IN MM.

.....
.....
.....

.....
.....
.....

REVISION
02-09-2009
09-10-2009
23-12-2009
28-12-2009
14-04-2011
29-05-2015

DATE: 09-01-2009
SBALE: 1 : 50 (A3)
DRAWN BY: ..
BHEBKED BY:

TITLE
Premium Booth
LT-C-9
R Corner

PROJEBT
PREMIUM BOOTH
3m x 3m
DATE: XXXXXXXX

SHEET
LT-C01a