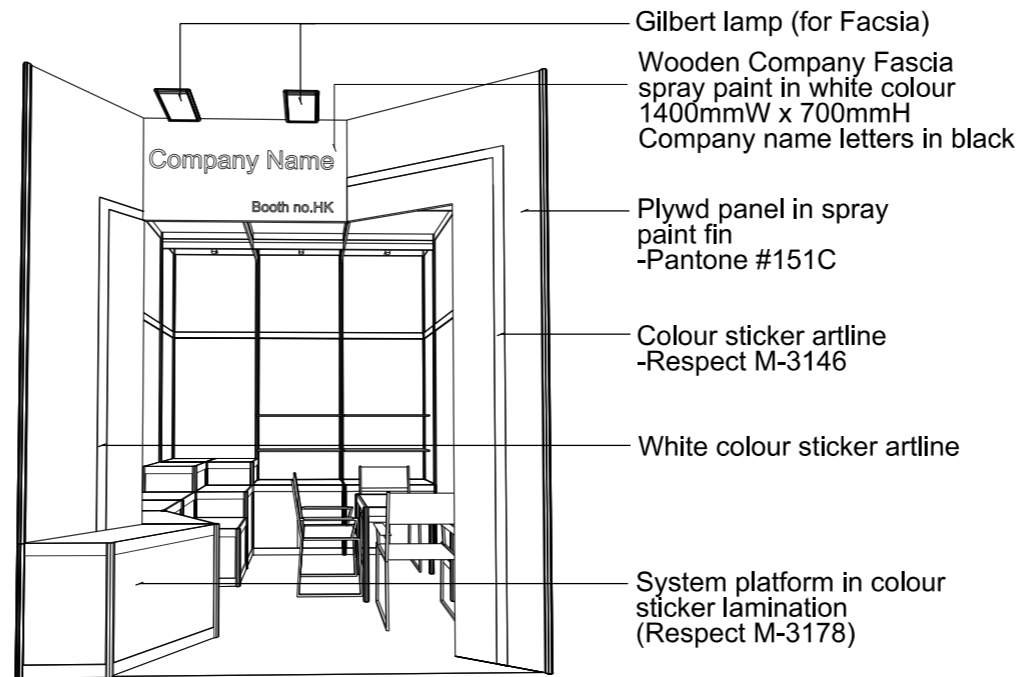
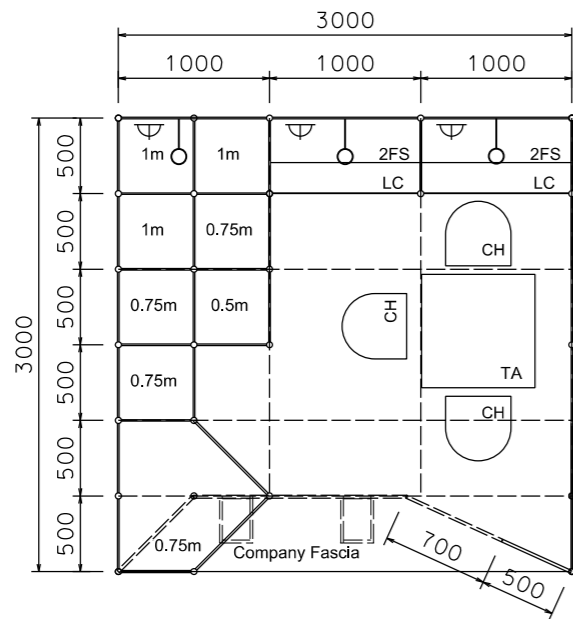


Premium Booth 3mW x 3mD One side open

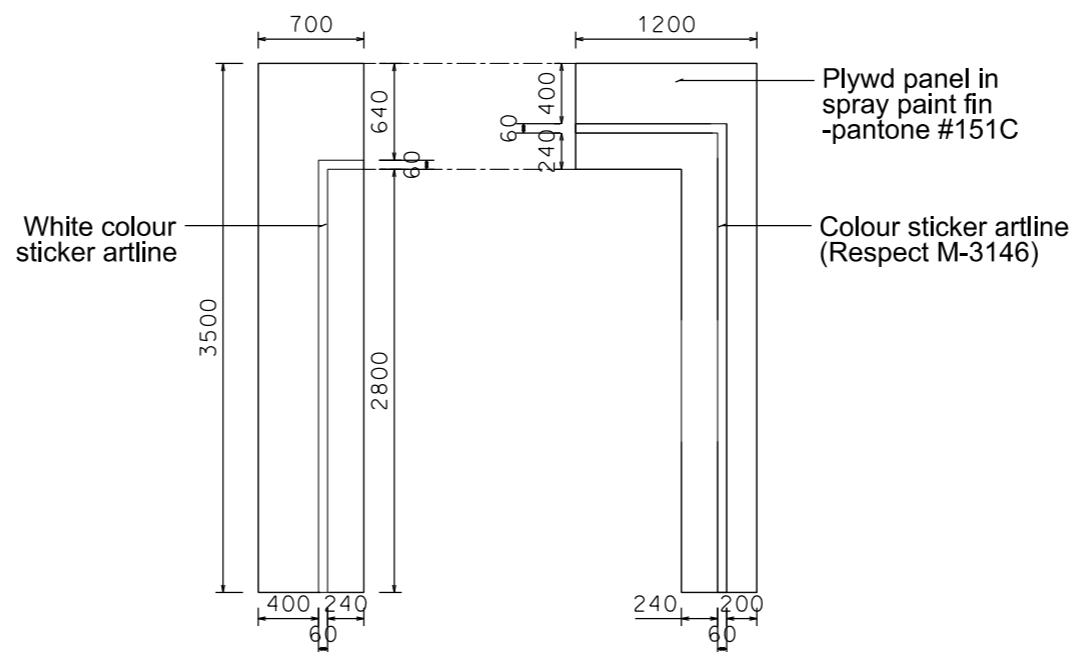
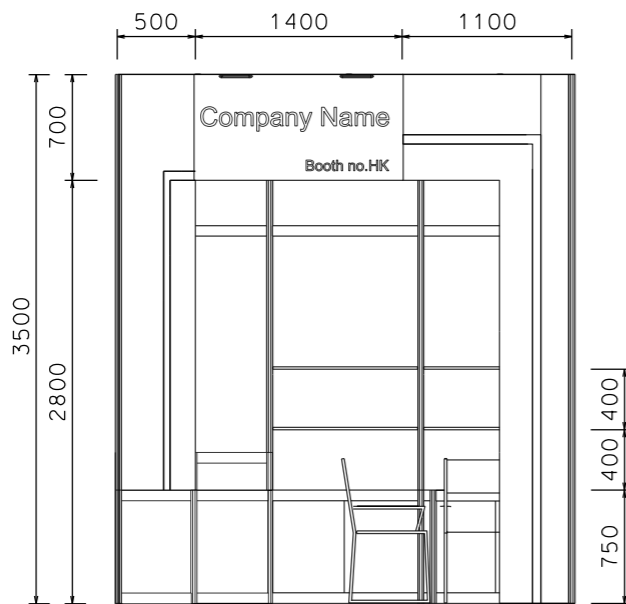
LT-C-9
3mW x 3mD x 3.5mH



COLOUR PERSPECTIVE N.T.S

PLAN

PERSPECTIVE N.T.S



FRONT ELEVATION

FACIA ELEVATION

BOOTH SPECIFICATION		QTY
	Lockable cabinet (1mL x 0.5mD x 0.75mH)	2
	Wooden shelf (flat) (1mL x 0.3mD)	4
	1mH podium (0.5m x 0.5m x 1mH)	3
	0.75mH podium (0.5m x 0.5m x 0.75mH)	3
	0.5mH podium (0.5m x 0.5m x 0.5mH)	1
	0.75mH podium in colour sticker lamination (Respect M-3178)	1
	Square meeting table (0.7m X 0.7m x 0.75mH)	1
	Black leather chair	3
	Longarmed spotlight w/23 watt energy saving lamp (yellow) set at 3.5mH	3
	800w Square pin power socket	3
	150W Gilbert lamp (for fascia)	2
	Ceiling grid (175mmH) set at 3.5mH	14m

FILE PATH - L:\Local Fair Premium Booth 2011\LT-C layout\LT-C-2dLayout_update.dgn



NOTES UNLESS OTHERWISE SPEBIFIED ALL DIMENSIONS ARE IN MM.

.....
.....
.....

.....
.....
.....

REVISION
02/09/2009
02/10/2009
09/10/2009
22/12/2009
28/12/2009
29/05/2015

DATE: 09-01-2009
SBALE: 1 : 50 (A3)
DRAWN BY: ..
BHEBKED BY:

TITLE
Premium Booth LT-C-9

PROJEBT
PREMIUM BOOTH 3m x 3m
DATE: XXXXXXXX

SHEET
LT-C01