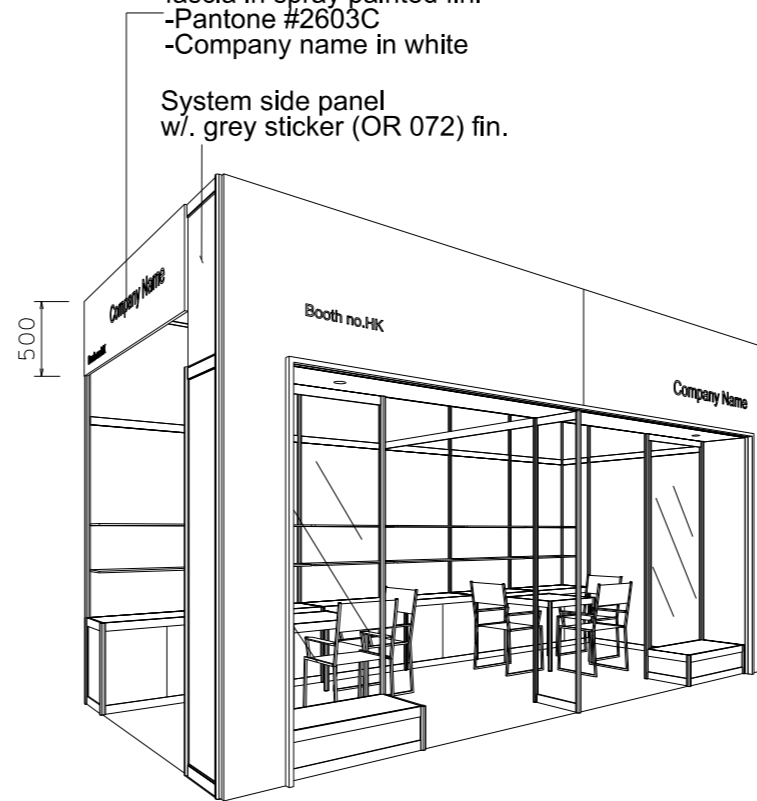
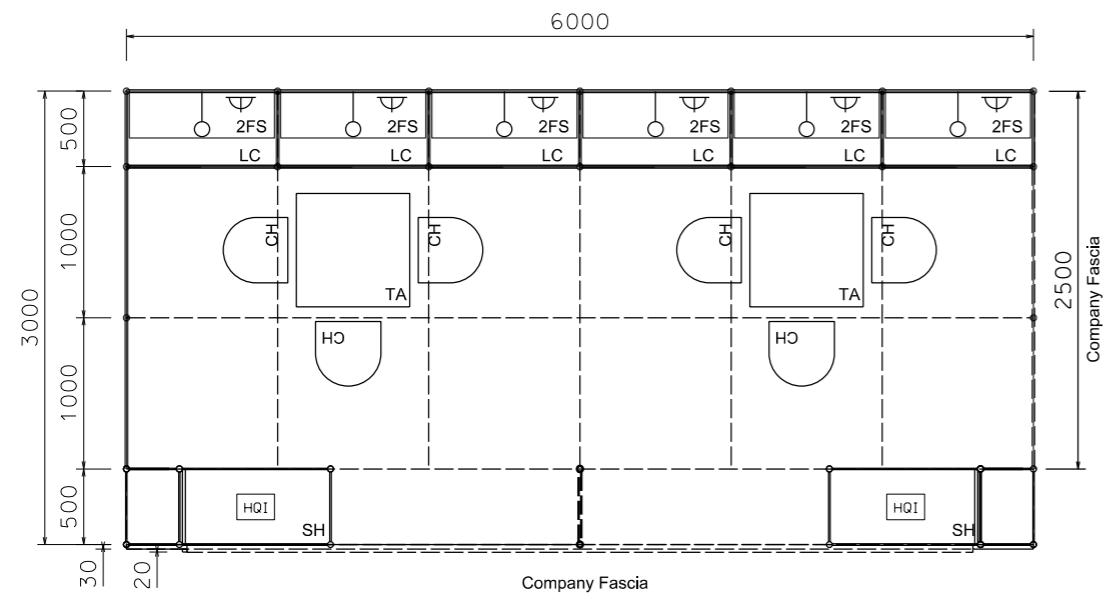


Premium Booth 6mW x 3mD Left Corner Booth

LT-B-18-L_Cnr
6mW x 3mD x 3.5mH

Wooden plywd company fascia in spray painted fin.
-Pantone #2603C
-Company name in white

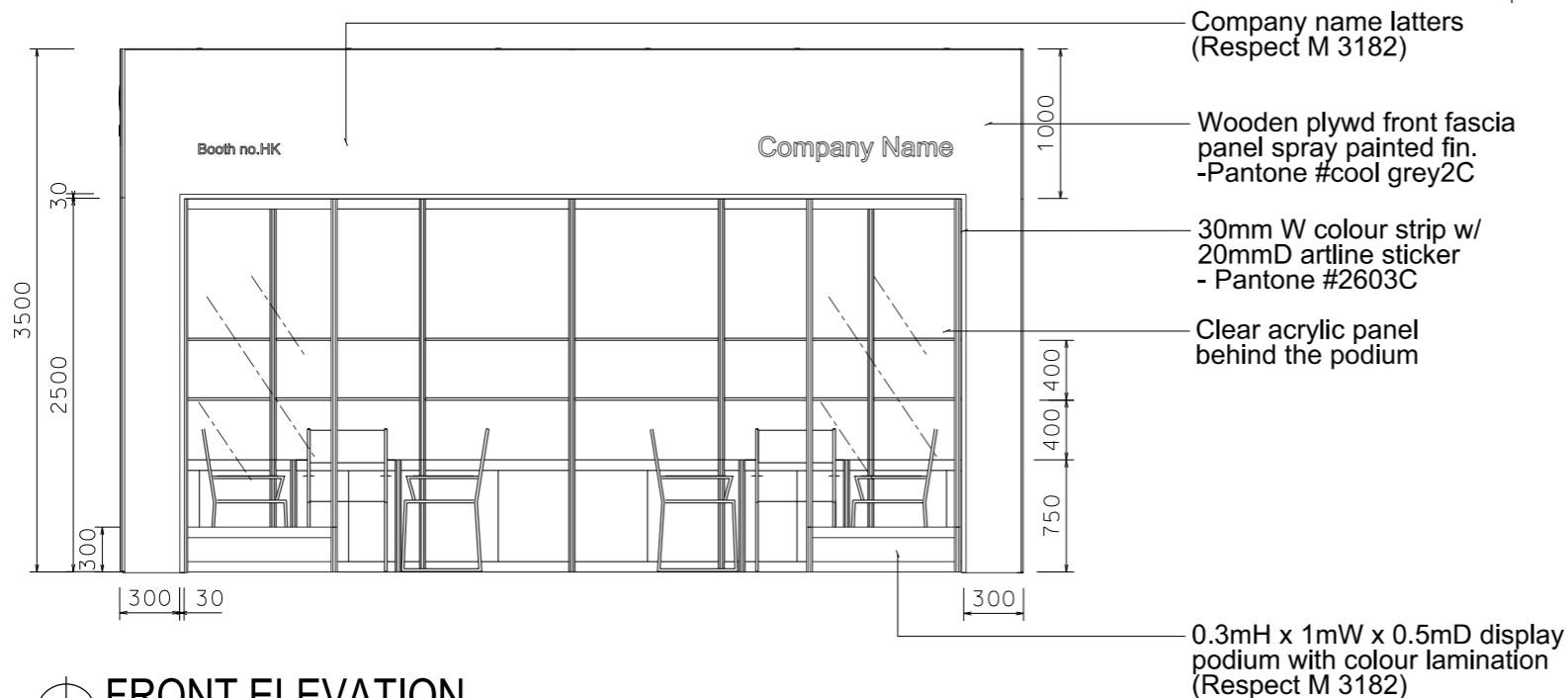
System side panel w/. grey sticker (OR 072) fin.



PLAN

PERSPECTIVE N.T.S.

COLOUR PERSPECTIVE N.T.S.



FRONT ELEVATION

| BOOTH SPECIFICATION | | QTY |
|---------------------|---|-------|
| | Front display podium (1mW x 0.3mH) with clear acrylic back panel in colour sticker lamination w/. 1 x HQ1 white light | 2 |
| | Lockable cabinet (1mL x 0.5mD x 0.75mH) | 6 |
| | Wooden shelf (flat) (1mL x 0.3mD) | 12 |
| | Square meeting table (0.7m X0.7m x 0.75mH) | 2 |
| | Black leather chair | 6 |
| | Longarmed spotlight w/23 watt energy saving lamp (yellow) set at 3.5mH | 6 |
| | 800w Square pin power socket | 6 |
| | Ceiling grid (175mmH) set at 3.5mH | 30.5m |

FILE PATH - L:\Local Fair Premium Booth 2011\LT-B layout\LT-B-2dLayout_update.dgn



NOTES UNLESS OTHERWISE SPECIFIED ALL DIMENSIONS ARE IN MM.

.....
.....
.....

REVISION
23/02/2010
13/04/2011
16-10-2013
06/02/2014

DATE: 06/02/2014
SCALE: 1 : 50 (A3)
DRAWN BY: ..
CHECKED BY:

TITLE
Premium Booth
LT-B-18
L Corner

PROJECT
PREMIUM BOOTH
6m x 3m
L Corner
DATE: XXXXXXXX

SHEET
LT-B026