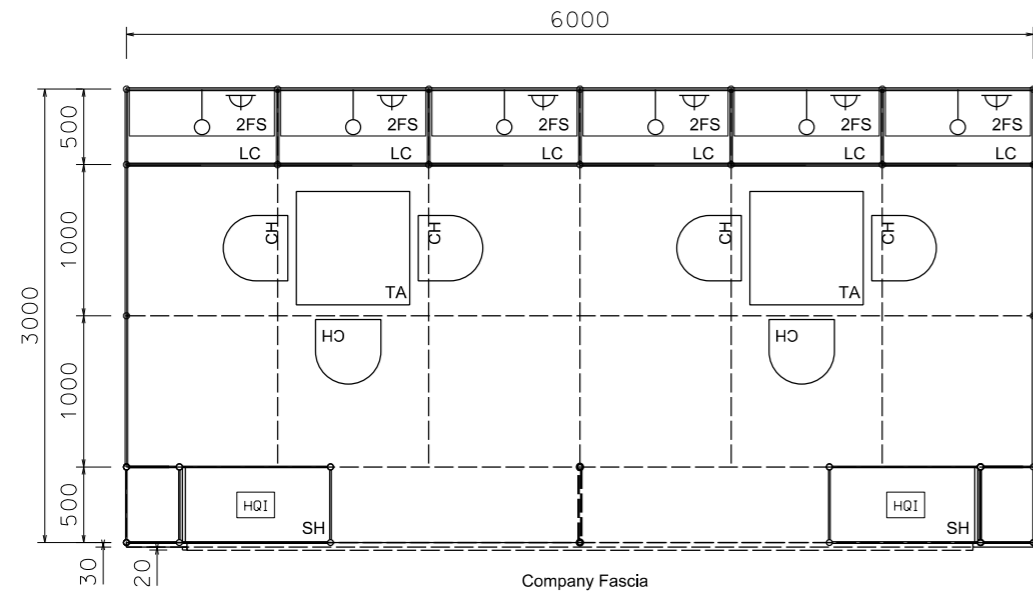
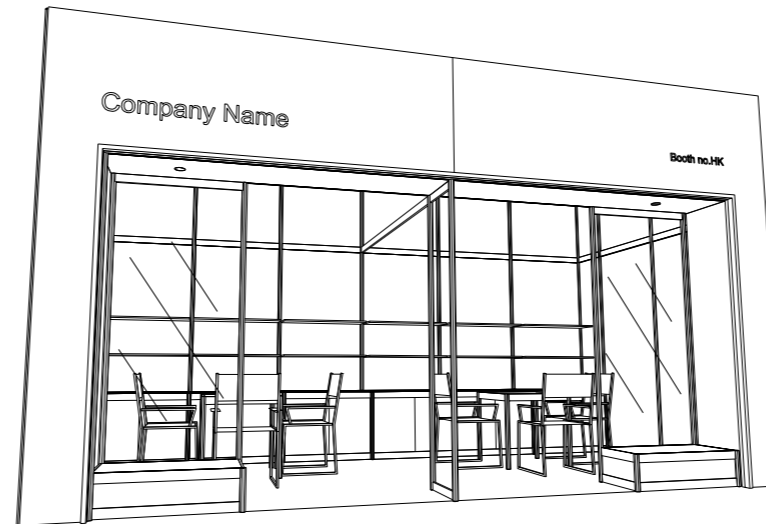


# Premium Booth 6mW x 3mD One side open

LT-B-18  
6mW x 3mD x 3.5mH



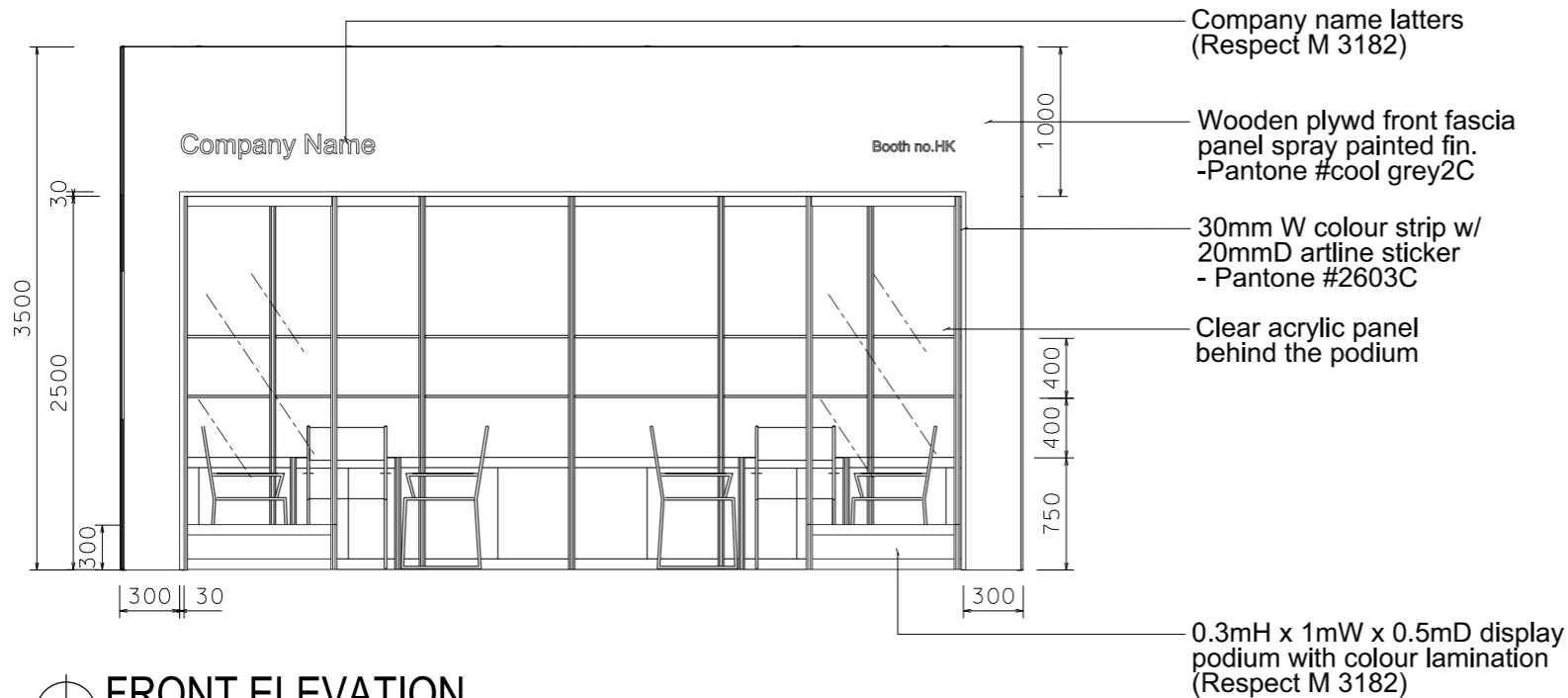
PLAN



PERSPECTIVE N.T.S



COLOUR PERSPECTIVE N.T.S



FRONT ELEVATION

BOOTH SPECIFICATION		QTY
	Front display podium (1mW x 0.3mH) with clear acrylic back panel in colour sticker lamination w/. 1 x HQ1 white light	2
	Lockable cabinet (1mL x 0.5mD x 0.75mH)	6
	Wooden shelf (flat) (1mL x 0.3mD)	12
	Square meeting table (0.7m X0.7m x 0.75mH)	2
	Black leather chair	6
	Longarmed spotlight w/23 watt energy saving lamp (yellow) set at 3.5mH	6
	800w Square pin power socket	6
	Ceiling grid (175mmH) set at 3.5mH	30.5m

FILE PATH - L:\Local Fair Premium Booth 2011\LT-B layout\LT-B-2dLayout\_update.dgn



**NOTES** UNLESS OTHERWISE SPECIFIED ALL DIMENSIONS ARE IN MM.

.....  
.....  
.....

.....  
.....  
.....

**REVISION**  
23/02/2010  
13/04/2011  
16-10-2013  
06/02/2014

**DATE:** 06/02/2014  
**SCALE:** 1 : 50 (A3)  
**DRAWN BY:** ..  
**CHECKED BY:** .....

**TITLE**  
Premium Booth  
LT-B-18

**PROJECT**  
PREMIUM BOOTH  
6m x 3m  
DATE: XXXXXXXX

**SHEET**  
LT-B02