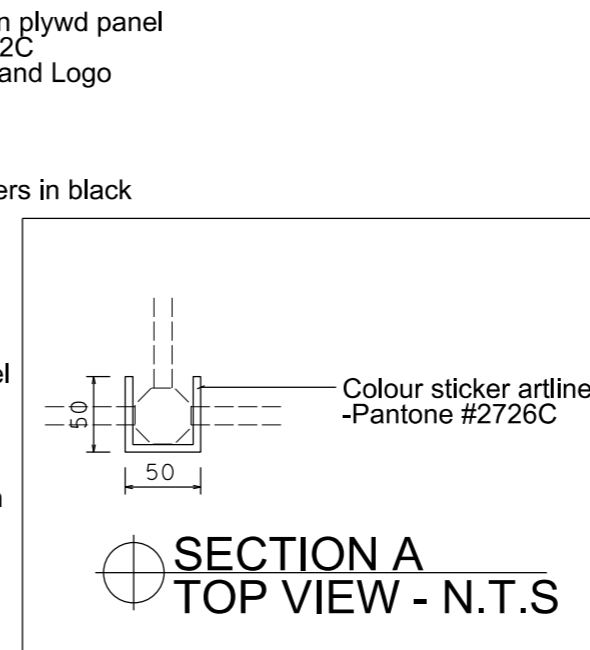
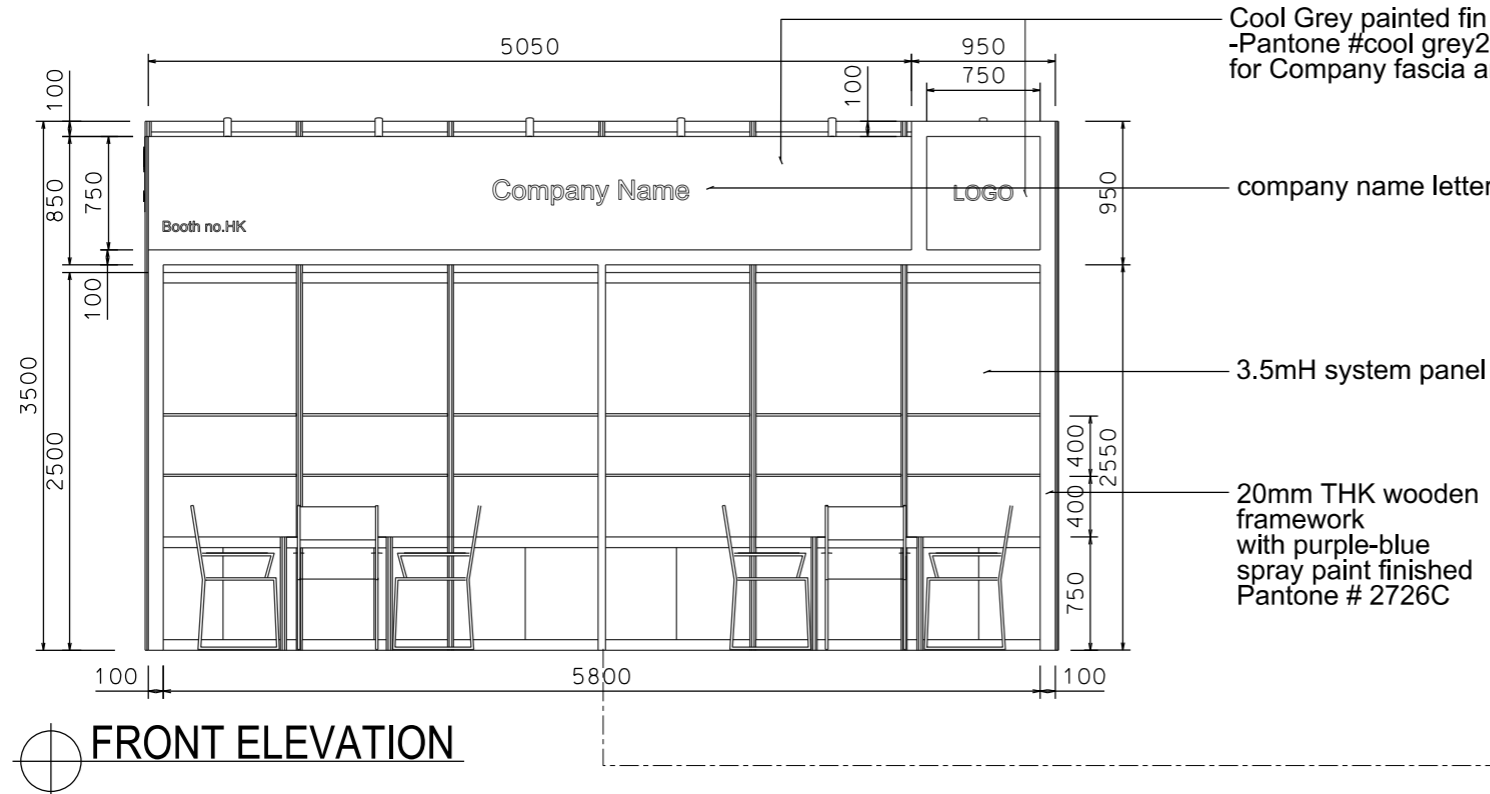
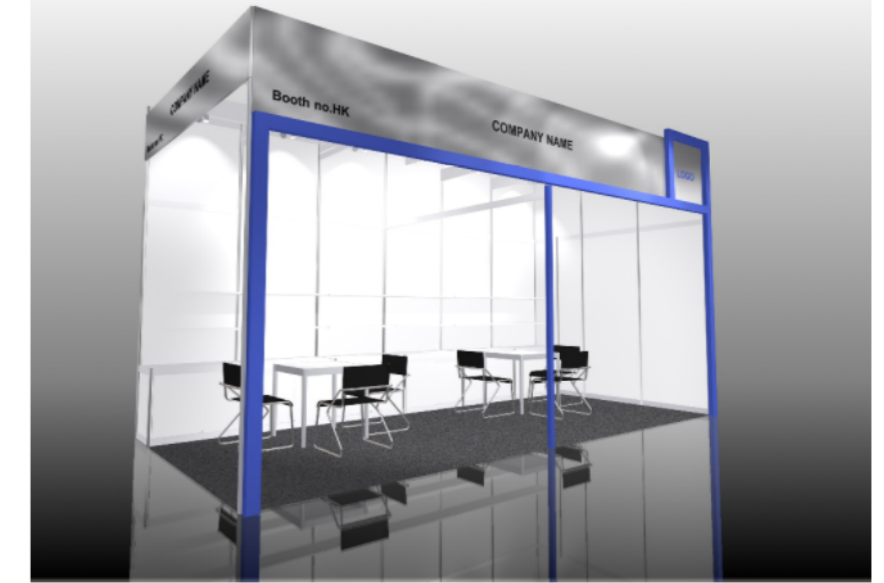
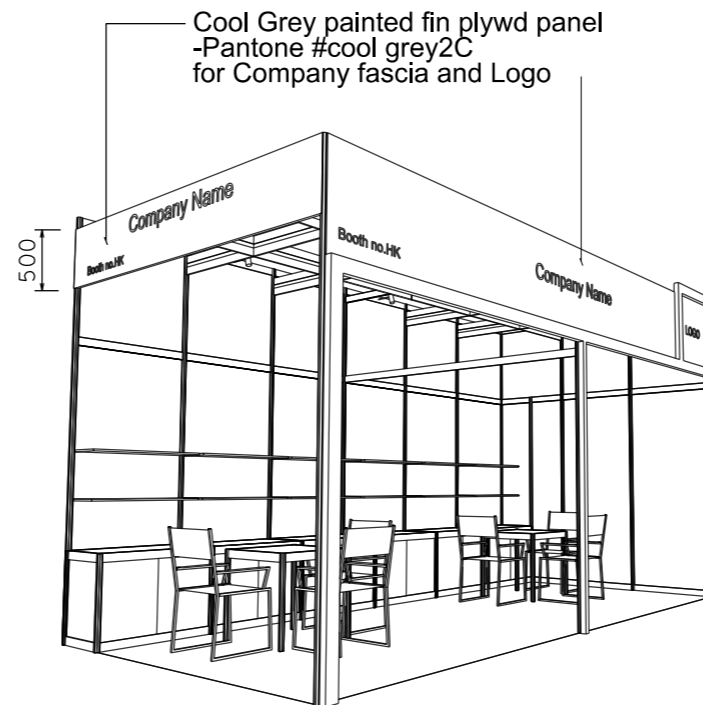
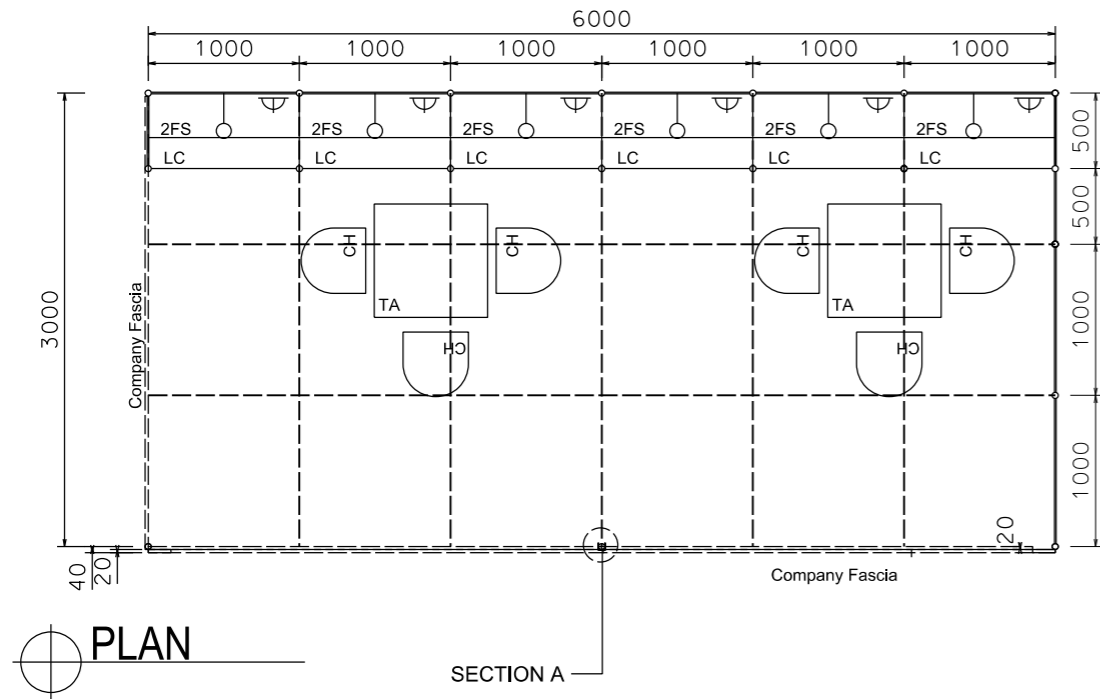


# Premium Booth 6mW x 3mD Left Corner Booth

LT-A-18-L Cnr  
6mW x 3mD x 3.5mH



BOOTH SPECIFICATION		QTY
	Lockable cabinet (1mL x 0.5mD x 0.75mH)	6
	Wooden shelf (flat) (1mL x 0.3mD)	12
	Square meeting table (0.7m X0.7m x 0.75mH)	2
	Black leather chair	6
	Longarmed spotlight w/23 watt energy saving lamp (yellow) set at 3.5mH	6
	800w Square pin power socket	6
	Ceiling grid (175mmH) set at 3.4mH	27m

FILE PATH - L:\Local Fair Premium Booth 2011\LT-A layout\LT-A-2dLayout\_2012.dgn



NOTES UNLESS OTHERWISE SPECIFIED ALL DIMENSIONS ARE IN MM.

.....  
.....  
.....

REVISION  
19/10/09  
23/02/2010  
25/02/2010  
13/12/2011

DATE: 12-01-2009  
SCALE: 1 : 50 (A3)  
DRAWN BY: ..  
CHECKED BY: .....

TITLE  
Premium Booth  
LT-A-18  
L-Corner

PROJECT  
PREMIUM BOOTH  
6m x 3m  
DATE: XXXXXXXX

SHEET  
LT-A026